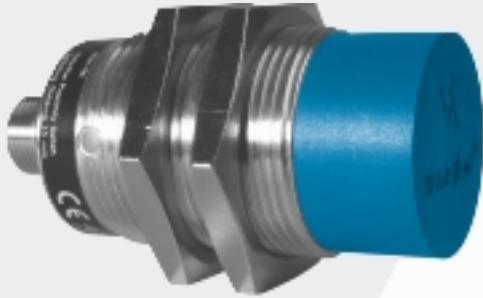


Inductive Analog Sensor

non-flush Housing X M30 x 1.5 Correction Factor 1

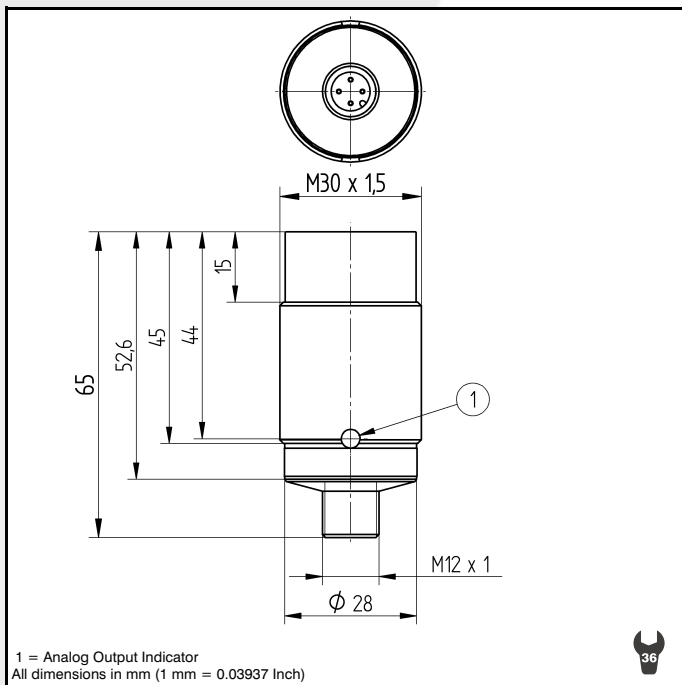
IX130RM65MG3

Part Number

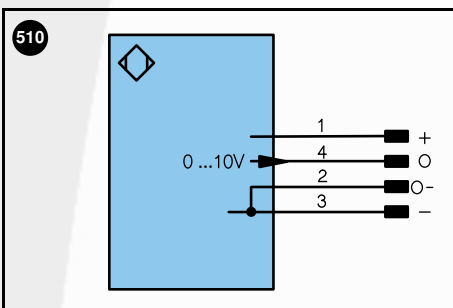


Technical Data

Inductive Data	
Working Range	3...13 mm
Measuring Distance	8 mm
Measuring Range	10 mm
Correction Factors V2A / Brass / Al approx.	1.2/1.2/1.2
Mounting	non-flush
Standard Target FE360, thickness 1mm	39 x 39 mm
Linearity	< 1 %
Resolution	4 μm
Electrical Data	
Supply Voltage	18...30 V DC
Current Consumption (U _b = 24V)	< 25 mA
Cut-Off Frequency	800 Hz
Temperature Drift	10 μm/°C
Temperature Range	-10...70 °C
Analog Output	0...10 V
Current Load Voltage Output	< 1 mA
Short Circuit Protection	yes
Reverse Polarity Protection	yes
Mechanical Data	
Housing	BrasNicPlated
Full Encapsulation	yes
Protection Mode	IP 67
Connection	M 12x1
Protective Insulation, Rated Voltage	50 V



Part Number	IX130RM65MG3
Analog Output	●
Connection Diagram No.	510
Suitable Plug No.	2



Legend			Wire colors according to DIN IEC 757		
+	Power supply "+"	U	Test input	BK	black
-	Power supply "0V"	W	Trigger input	BN	brown
~	Power supply (AC Voltage)	O	Analog output (1,2,3,...)	RD	red
A	Switching output (1,2,3...) / NO	O-	Ground for the analog output	OG	orange
∧	Switching output (1,2,3...) / NC	BZ	Block discharge	YE	yellow
V	Contamination / Error output (NO)	Aw	Valve output	GN	green
∇	Contamination / Error output (NC)	a	Valve control output "+"	BU	blue
E	Input (analog or digital)	b	Valve control output "0V"	VT	violet
T	Teach input	SY	Synchronization	GY	grey
Z	Time delay (activation)	E+	Receiver-Line	WH	white
S	Shielding	S+	Emitter-Line	PK	pink
RxD	RS-232 receive path	±	Grounding	GNYE	green yellow
TxD	RS-232 send path	SnR	Switching Distance Reduction		
RDY	Ready	USBD+	USB data +		
GND	Ground	USBD-	USB data -		
CL	Clock				

Specifications are subject to change without notice

08/06