

Reflex Sensors

with Background Suppression **LASER**

YN33PA3

Part Number



- High Precision Background Suppression up to 300 mm
- Stainless Steel Plug (V2A)
- Switching Frequency: 1 kHz



Technical Data

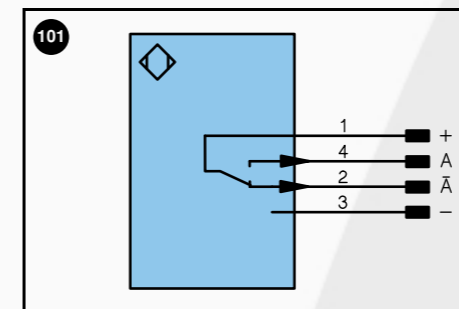
Optical Data	
Range	300 mm
Switching Hysteresis	< 1 %
Light Source	Laser (red)
Wave Length	655 nm
Service Life (T = +25°C)	100000 h
Laser Protection Class (EN 60825-1)	2
max. Ambient Light	10000 Lux
Light Spot Diameter	see Table 1
Electrical Data	
Supply Voltage	10...30 V DC
Current Consumption (U _b = 24V)	< 20 mA
Switching Frequency	1 kHz
Response Time	500 μs
Temperature Drift	< 2 %
Temperature Range	-25...60 °C
Switching Output Voltage Drop	< 2.5 V
PNP Switching Output/Switching Current	200 mA
Short Circuit Protection	yes
Reverse Polarity Protection	yes
Overload Protection	yes
Mechanical Data	
Housing	Plastic
Protection Mode	IP 67
Connection	M 12x1
Protective Insulation, Rated Voltage	50 V



Table 1

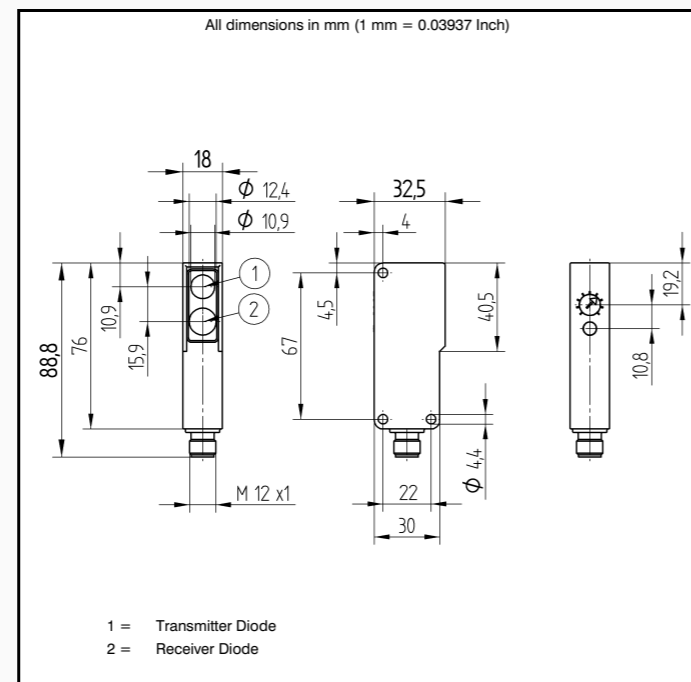
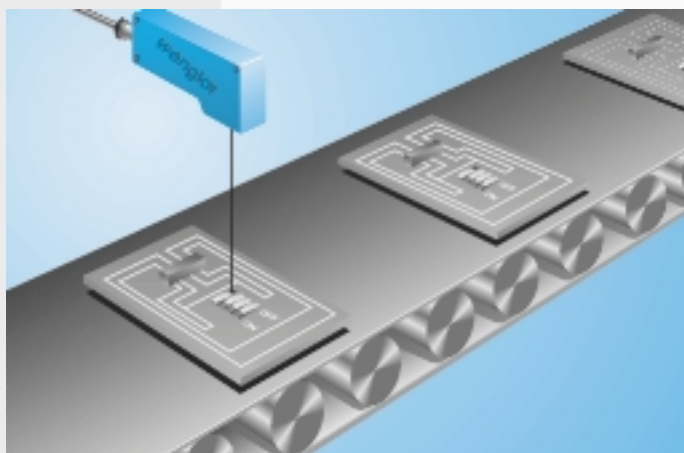
Range	60 mm	150 mm	300 mm
Light Spot Diameter	3 mm	2 mm	3 mm

Plug Version	Part Number
PNP NO/NC antivalent	●
Connection Diagram No.	101
Control Panel No.	N 3
Suitable Plug No.	2



Legend		Wire colors according to DIN IEC 757
+	Power supply "+"	BK black
-	Power supply "0V"	BN brown
-	Power supply (AC Voltage)	RD red
A	Switching output (1,2,3...)/ NO	OG orange
A̅	Switching output (1,2,3...)/ NC	YE yellow
V	Contamination / Error output (NO)	GN green
V̅	Contamination / Error output (NC)	BU blue
E	Input (analog or digital)	VT violet
T	Teach input	GY grey
Z	Time delay (activation)	WH white
S	Shielding	PK pink
RxD	RS-232 receive path	GNYE green yellow
TxD	RS-232 send path	
U	Test input	
W	Trigger input	
O	Analog output (1,2,3,...)	
O-	Ground for the analog output	
BZ	Block discharge	
Aw	Valve output	
a	Valve control output "+"	
b	Valve control output "0V"	
SY	Synchronization	
E+	Receiver-Line	
S+	Emitter-Line	
⊕	Grounding	

These sensors are particularly well suited for recognizing objects in front of any type of background. The color, shape and surface characteristics of the object have practically no influence on sensor switching performance.



Accessories

Mounting Bracket WN

Ctrl. Panel



- 05 = Switching Distance Adjuster
- 30 = Switching Status/Contamination Warning

Switching Distance Deviation

Typical characteristic curve based on Kodak white, 90%

