

Analog Evaluation Unit

menu driven

AW02

Part Number

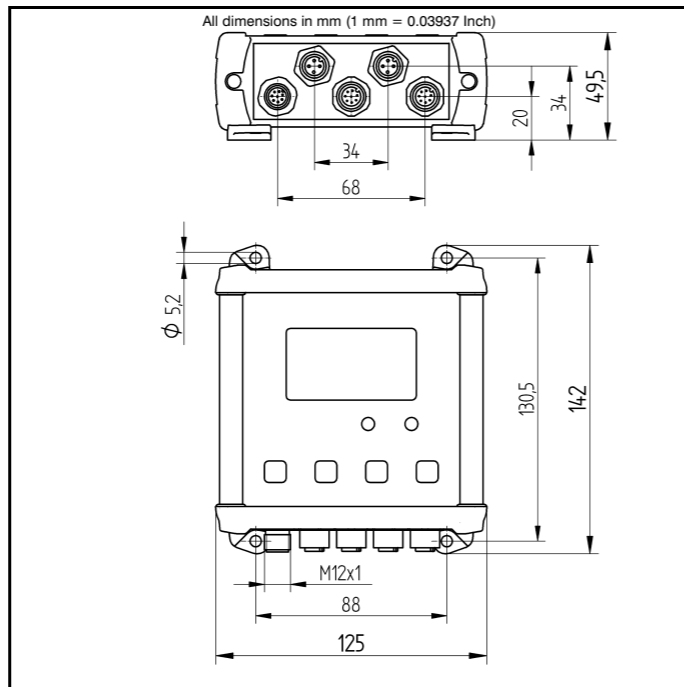
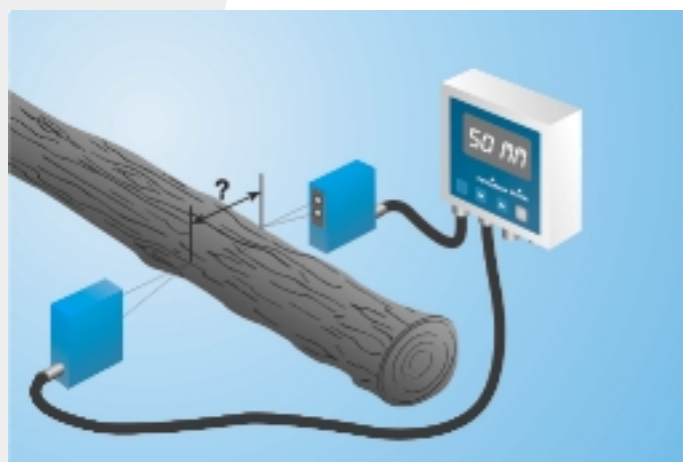


Technical Data

Electrical Data	
Supply Voltage	18...30 V DC
Current Consumption (U _b = 24V)	100 mA
Measurement Rate	5000 /s
Temperature Range	-10...50 °C
Switching Outputs	2
PNP Switching Output/Switching Current	400 mA
PNP Error Output/Switching Current	400 mA
Analog Output	0...10 V
Short Circuit Protection	yes
Reverse Polarity Protection	yes
Interface	RS-232
Baud Rate	38,4 kBd
Protocol	8 N 1
Resolution	< 5 mV
Analog Inputs	2
Analog Input	0...10 V
Mechanical Data	
Housing	Aluminum
Protection Mode	IP 65
Connection	M 12x1

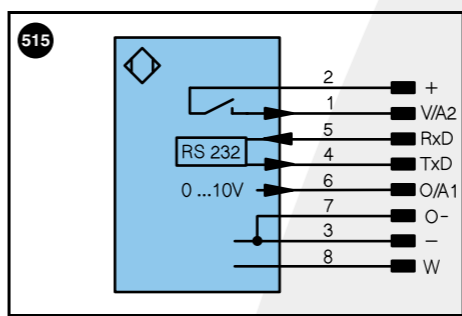
- Easy operation via menu-driven LCD display
- High-speed evaluation of two analog voltages (GOOD/BAD selection)
- Measurement of thickness, difference, height, unbalance and volume flow
- Two independent outputs

The Evaluation Unit AW02 is able to process the analog voltage values of two sensors from 0 to 10V. The user-friendly LCD-display indicates all measurement- and result values. The measurement units can be chosen freely, no matter if volt, millimeter, bar or degree Celsius.



Specifications are subject to change without notice
27/06

Plug Version	Part Number
	AW02
Error Output	●
PNP NO/NC switchable	●
Analog Output	●
RS-232 Interface	●
Connection Diagram No.	515
Control Panel No.	AW2

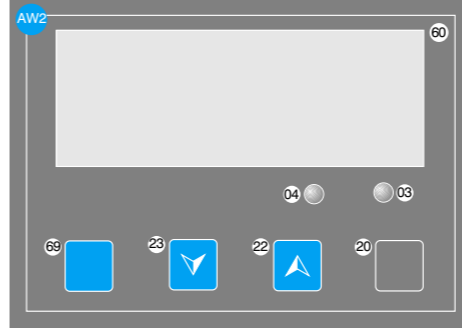


Legend		Wire colors according to DIN IEC 757
+	Power supply "+"	BK black
-	Power supply "0V"	BN brown
-	Power supply (AC Voltage)	RD red
A	Switching output (1,2,3...)/ NO	OG orange
A	Switching output (1,2,3...)/ NC	YE yellow
V	Contamination / Error output (NC)	GN green
V	Contamination / Error output (NC)	BU blue
E	Input (analog or digital)	VT violet
T	Teach input	GY grey
Z	Time delay (activation)	WH white
S	Shielding	PK pink
RxD	RS-232 receive path	GNYE green yellow
TxD	RS-232 send path	
RdY	Ready	
GND	Ground	
CL	Clock	
U	Test input	
W	Trigger input	
O	Analog output (1,2,3...)	
O-	Ground for the analog output	
BZ	Block discharge	
AW	Valve output	
a	Valve control output "+"	
b	Valve control output "0V"	
E+	Receiver-Line	
E-	Emitter-Line	
+	Grounding	
S-R	Switching Distance Reduction	
USB+	USB data +	
USB-	USB data -	
Ba	Interfaces-Bus A(+)/B(-)	
La	Emitted light disengageable	

Accessories

Serial Interface Adapter S232W3

Ctrl.Panel



- 03 = Error Indicator
- 04 = Function Indicator
- 20 = Enter Button
- 22 = UP Button
- 23 = Down Button
- 60 = Display
- 69 = ESC Button