

# Evaluation Unit

for Color Sensor FD

## FN04

Part Number



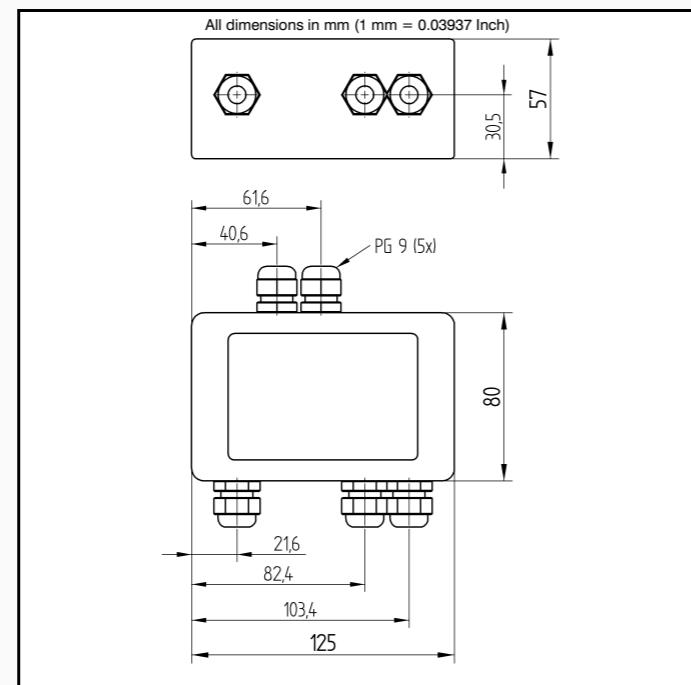
- Adjustable color sensitivity
- Any four colors can be selected
- External Teach-In / External Triggering
- Teach-In

In combination with the FD01 up to four colors can be selected with this evaluation unit. Several evaluation units can be connected parallel.



### Technical Data

Electrical Data	
Supply Voltage	20...30 V DC
Current Consumption with Halogen Bulb	< 1 A
Current Consumption without Halogen Bulb	< 100 mA
Switching Frequency	1 kHz
Response Time with 1 Color Channel	500 μs
Response Time with 2 Color Channels	600 μs
Response Time with 3 Color Channels	900 μs
Response Time with 4 Color Channels	1400 μs
Voltage Output Light Source	6 V DC
Current Load Voltage Output Light Source	2 A
Voltage Output Sensor	20...30 V DC
Current Load Voltage Output Sensor	50 mA
Temperature Range	0...50 °C
Color Outputs	4
PNP Color Output/Switching Current	400 mA
Error Outputs	1
PNP Error Output/Switching Current	400 mA
Short Circuit Protection	yes
Reverse Polarity Protection	yes
Analog Inputs	3
Analog Input	0...10 V
Mechanical Data	
Housing	Aluminum
Protection Mode	IP 65
Connection	PG 9



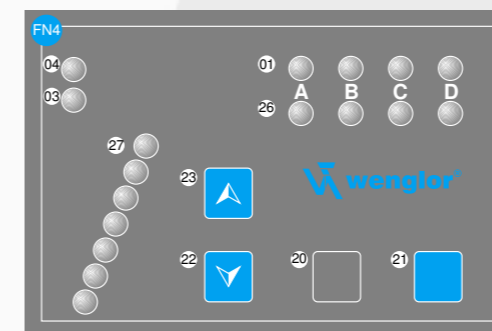
Specifications are subject to change without notice  
06/03



Plug Version	
Part Number	FN04
Error Output	●
PNP NO	●
Control Panel No.	FN4



### Ctrl. Panel



- 01 = Switching Status Indicator
- 03 = Error Indicator
- 04 = Function Indicator
- 20 = Enter Button
- 21 = Mode Button
- 22 = UP Button
- 23 = Down Button
- 26 = Color Channel Indicator
- 27 = Window Width Indicator