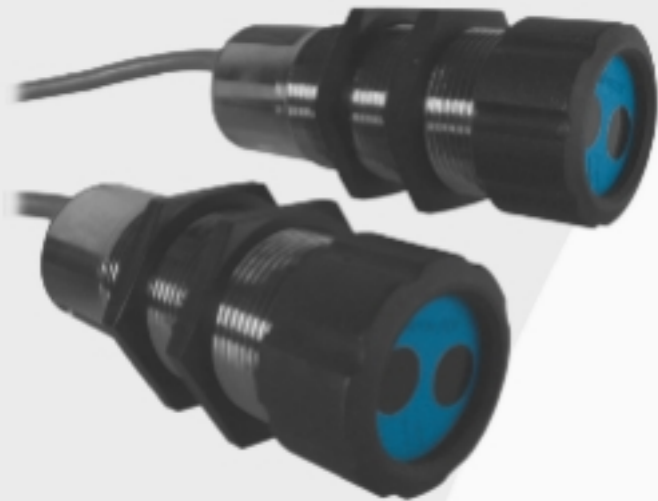


# Through Beam Sensors



## EF107PDV

Part Number

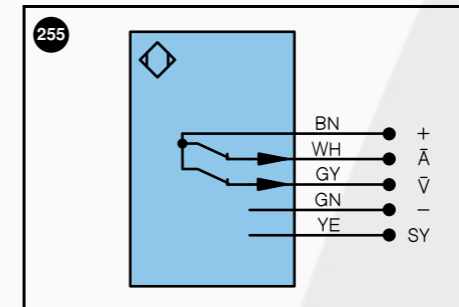


- Contamination Output
- Large Range
- Usable with or without Glass Fiber Optic Cabel

### Technical Data

Optical Data	
Range	25000 mm
Switching Hysteresis	< 15 %
max. Ambient Light	10000 Lux
Opening Angle	12°
Electrical Data	
Sensor Type	Receiver
Supply Voltage	10...30 V DC
Current Consumption (U <sub>b</sub> = 24V)	< 40 mA
Switching Frequency	100 Hz
Response Time	5 ms
Temperature Drift	< 10 %
Temperature Range	-10...60 °C
Switching Output Voltage Drop	< 2.5 V
PNP Switching Output/Switching Current	200 mA
Residual Current Switching Output	< 50 μA
PNP Contamination Output/Switching Current	50 mA
Short Circuit Protection	yes
Reverse Polarity Protection	yes
Overload Protection	yes
Mechanical Data	
Housing	BrasNicPlated
Full Encapsulation	yes
Protection Mode	IP 67
Connection	Prewired
Cabel Length	2 m

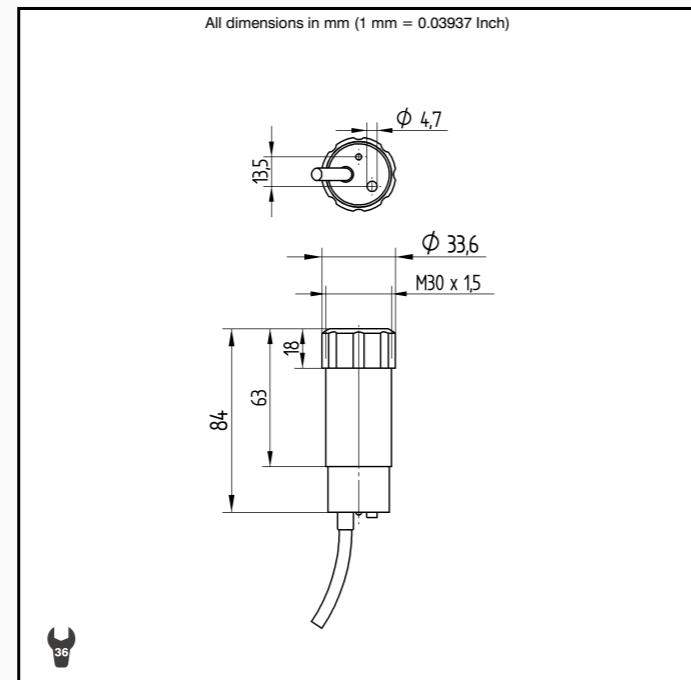
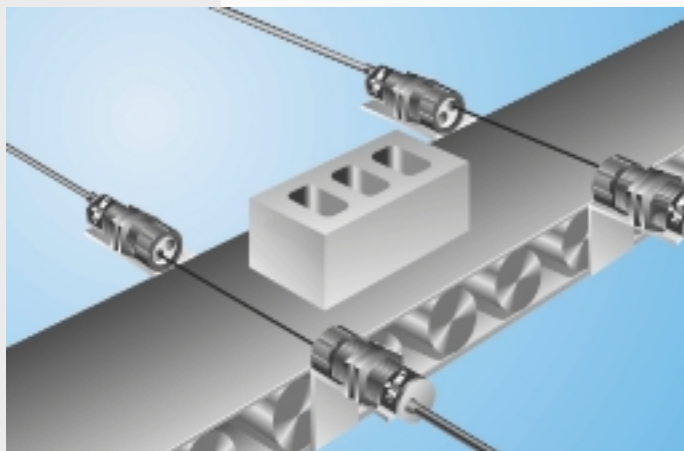
Prewired Version	
Part Number	EF107PDV
Contamination Output	●
PNP NC	●
Connection Diagram No.	255
Control Panel No.	F 1
Suitable Fiber Optic Cabel Adapter	1



Legend			
+	Power supply "+"	U	Test input
-	Power supply "0V"	W	Trigger input
~	Power supply (AC Voltage)	O	Analog output (1,2,3,...)
A	Switching output (1,2,3...)/ NO	O-	Ground for the analog output
∧	Switching output (1,2,3...)/ NC	BZ	Block discharge
V	Contamination / Error output (NO)	Aw	Valve output
∇	Contamination / Error output (NC)	a	Valve control output "+"
E	Input (analog or digital)	b	Valve control output "0V"
T	Teach input	SY	Synchronization
Z	Time delay (activation)	E+	Receiver-Line
S	Shielding	S+	Emitter-Line
RxD	RS-232 receive path	⊕	Grounding
TxD	RS-232 send path		

Wire colors according to DIN IEC 757	
BK	black
BN	brown
RD	red
OG	orange
YE	yellow
GN	green
BU	blue
VT	violet
GY	grey
WH	white
PK	pink
GNYE	green yellow

These light barriers have been specially developed for use with glass fiber optic cable, but they function without fiber optics as well. The contamination output assures reliable sensor operation, even in aggressive industrial environments. Thanks to their large working range, the devices demonstrate excellent functional reliability in highly contaminated environments.

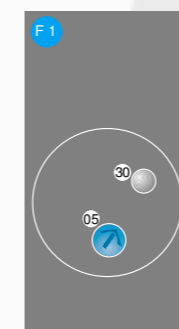


Specifications are subject to change without notice  
28/02

### Accessories

Mounting Bracket W30

### Ctrl. Panel



05 = Switching Distance Adjuster  
30 = Switching Status/Contamination Warning