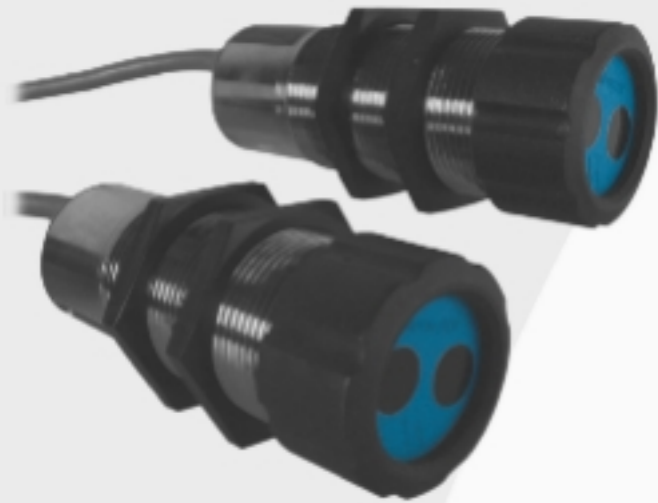


Through Beam Sensors



SF107

Part Number

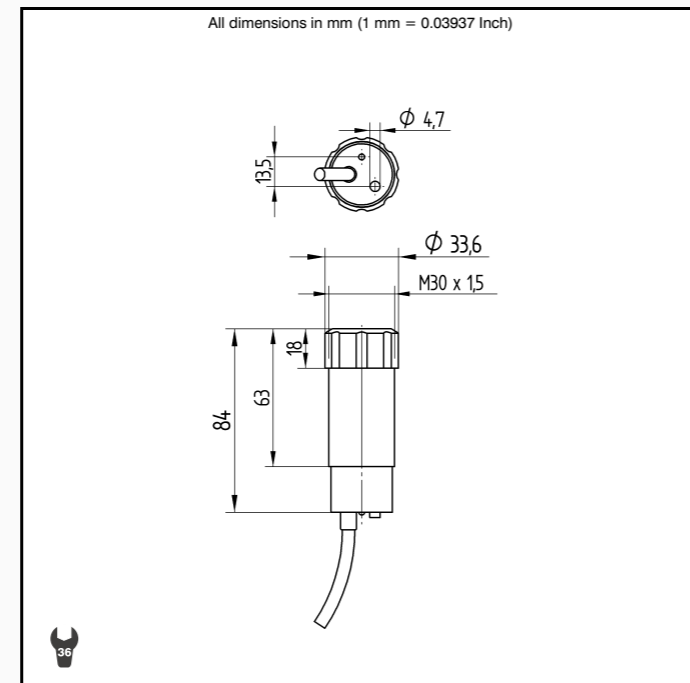
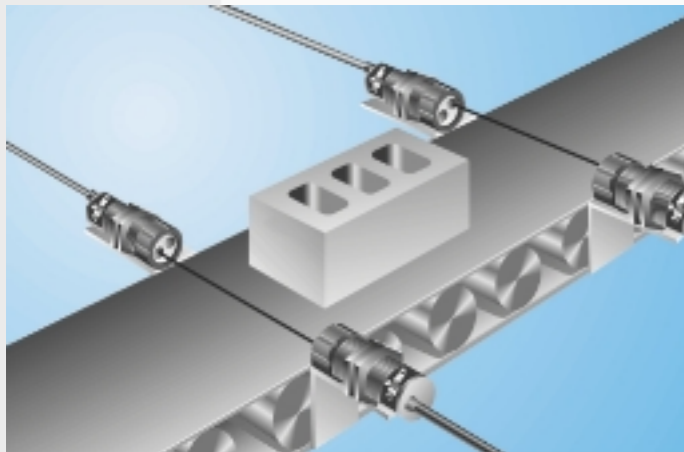


Technical Data

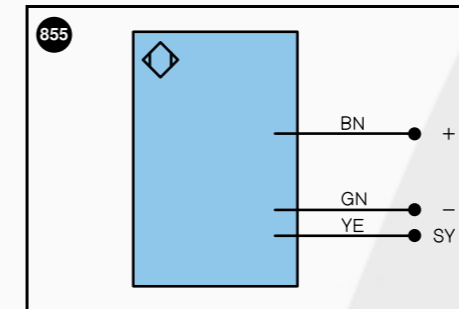
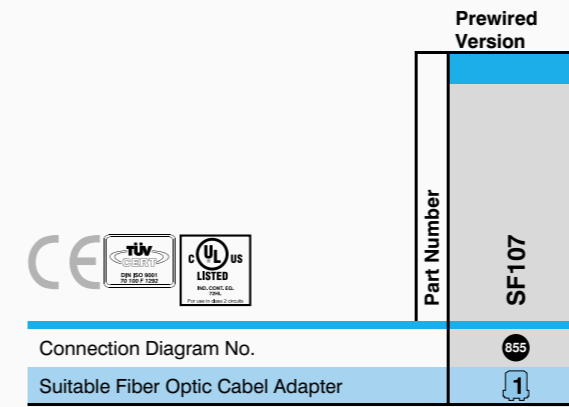
Optical Data	
Range	25000 mm
Light Source	Infrared Light
Service Life (T = +25°C)	100000 h
Opening Angle	12°
Electrical Data	
Sensor Type	Emitter
Supply Voltage	10...30 V DC
Current Consumption (U _b = 24V)	< 40 mA
Temperature Drift	< 10 %
Temperature Range	-10...60 °C
Short Circuit Protection	yes
Reverse Polarity Protection	yes
Overload Protection	yes
Mechanical Data	
Housing	BrasNicPlated
Full Encapsulation	yes
Protection Mode	IP 67
Connection	Prewired
Cabel Length	2 m

- Large Range
- Usable with or without Glass Fiber Optic Cabel

These light barriers have been specially developed for use with glass fiber optic cabel, but they function without fiber optics as well. The contamination output assures reliable sensor operation, even in aggressive industrial environments. Thanks to their large working range, the devices demonstrate excellent functional reliability in highly contaminated environments.



Specifications are subject to change without notice
28/02



Legend		Wire colors according to DIN IEC 757
+	Power supply "+"	BK black
-	Power supply "0V"	BN brown
-	Power supply (AC Voltage)	RD red
Z	Switching output (1,2,3...)/ NO	OG orange
A	Switching output (1,2,3...)/ NC	YE yellow
V	Contamination / Error output (NO)	GN green
∇	Contamination / Error output (NC)	BU blue
E	Input (analog or digital)	VT violet
T	Teach input	GY grey
Z	Time delay (activation)	WH white
S	Shielding	PK pink
RxD	RS-232 receive path	GNYE green yellow
TxD	RS-232 send path	
U	Test input	
W	Trigger input	
O	Analog output (1,2,3...)	
O-	Ground for the analog output	
BZ	Block discharge	
Aw	Valve output	
a	Valve control output "+"	
b	Valve control output "0V"	
SY	Synchronization	
E+	Receiver-Line	
S+	Emitter-Line	
⊕	Grounding	

Accessories

Mounting Bracket W30