



Stainless Steel-Ball Valves

2- and 3-Way Ball Valves with
Screw Thread and Weld Ends



measuring
•
monitoring
•
analysing



- p_{max.} PN 64
- t_{max.} +180 °C
- Connections:
screw thread G 1/4 to G 2
- Weld ends DN 10 to DN 50

- For steam, gaseous, liquid
and viscous media
- 1-, 2- and 3-part versions
- T- and L-bore
(for 3-way version)



KOBOLD offices exist in the following countries:

**ARGENTINA, AUSTRIA, BELGIUM, BRAZIL, CANADA, CHINA,
FRANCE, GERMANY, GREAT BRITAIN, ITALY, NETHERLANDS,
PERU, POLAND, SWITZERLAND, USA, VENEZUELA**

KOBOLD Messring GmbH
Nordring 22-24
D-65719 Hofheim/Ts.
☎ (06192) 299-0
Fax (06192) 23398
E-mail: info.de@kobold.com
Internet: www.kobold.com

Models:
**KUG-
ZE, ZF,
ZG, PD**

Design

Three-piece, threaded joint construction with full cylindrical bore. stamping as per AD approval certificate A4.

Materials

Body	stainless steel 1.4408
Ball	stainless steel 1.4408
Ball gasket	PTFE, glass-fiber reinforced
Spindle gasket	PTFE
Handle	stainless steel 1.4301, plastic sheathed

Technical details

Connections	female thread G 1/4 to G 2 weld ends DN 10 to DN 50 (to G4 or DN 100 also available upon request)
Temperature range	-30 °C to +180 °C
Nominal pressure	PN 64/PN 40 (G 1 1/4 - G 2)
Operation	90 ° rotation of handle

Model with threaded connection



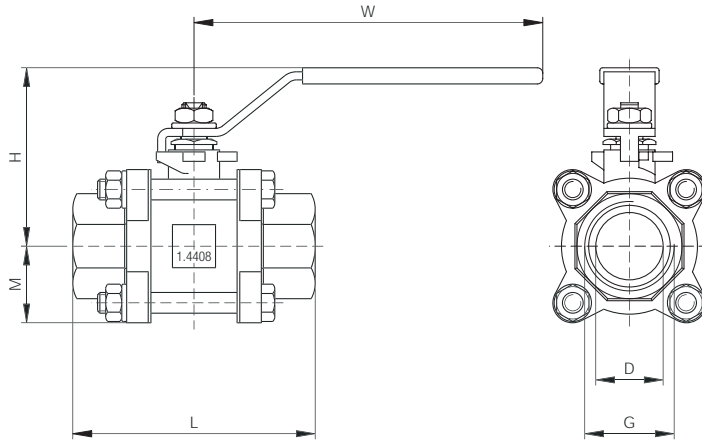
Model with weld ends



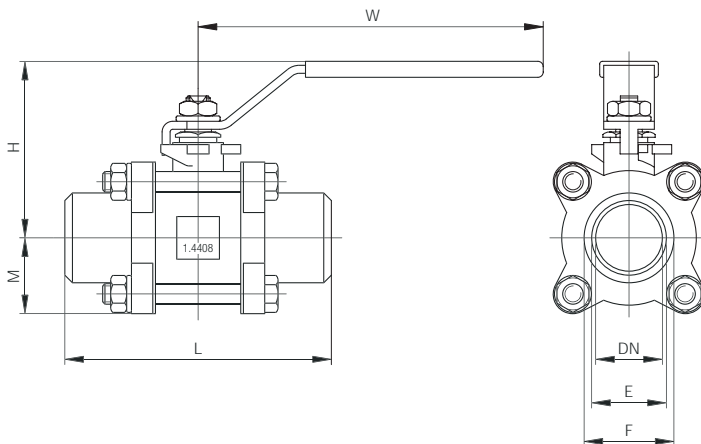
Ordering details (example: KUG-ZER 08)

Connection female thread	Order no.	Connection weld ends	Order no.
G 1/4	KUG-ZER 08	-	-
G 3/8	KUG-ZER 10	DN 10	KUG-ZEW 10
G 1/2	KUG-ZER 15	DN 15	KUG-ZEW 15
G 3/4	KUG-ZER 20	DN 20	KUG-ZEW 20
G 1	KUG-ZER 25	DN 25	KUG-ZEW 25
G 1 1/4	KUG-ZER 32	DN 32	KUG-ZEW 32
G 1 1/2	KUG-ZER 40	DN 40	KUG-ZEW 40
G 2	KUG-ZER 50	DN 50	KUG-ZEW 50

Threaded connection



Weld ends



Dimensions with screw thread

Scew Thread G	D mm	L mm	H mm	M mm	W mm	Weight kg
1/4	12	55	43	19	80	0.4
3/8	12	60	48	22	80	0.4
1/2	15	75	52	24	80	0.7
3/4	20	80	65	24	100	0.8
1	25	90	72	28	125	1.1
1 1/4	32	110	81	36	125	1.7
1 1/2	38	120	83	38	160	2.4
2	50	140	98	49	160	4.4

Dimensions with weld ends

DN mm	L mm	H mm	M mm	W mm	E mm	F mm	Weight kg
10	70	48	22	100	14	17.2	0.4
15	75	52	24	100	17	21.3	0.7
20	90	65	24	115	22	26.9	0.8
25	100	72	28	130	28	33.7	1.1
32	110	81	36	165	37	42.4	1.7
40	125	83	38	152	43	48.3	2.4
50	150	98	38	195	54	60.3	4.4



Design

Two-piece threaded-joint construction with full cylindrical bore. Stamping as per AD approval certificate A4.

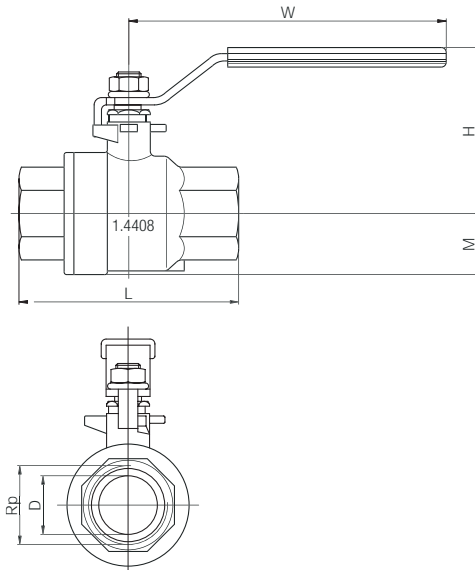
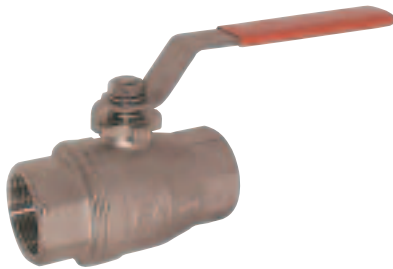
Materials

Body stainless steel 1.4408
 Ball stainless steel 1.4401
 Ball gasket PTFE, glass-fiber reinforced
 Handle stainless steel 1.4301, plastic sheathed

Technical details

Connections female thread Rp 1/4 to Rp 2 (as per DIN 2999)
 Temperature range -30 °C to +180 °C
 Nominal pressure PN 64/PN 40 (G 1 1/4 - G 2)
 Operation 90° rotation of handle

KUG-ZF



Dimensions and ordering details (example: KUG-ZFR 08)

Screw thread Rp	Order no. Female thread	D mm	L mm	H mm	M mm	W mm	Weight kg
1/4	KUG-ZFR 08	11	50	45	14	80	0.16
3/8	KUG-ZFR 10	12	60	45	14	80	0.15
1/2	KUG-ZFR 15	15	75	45	17	80	0.26
3/4	KUG-ZFR 20	20	80	56	20	105	0.42
1	KUG-ZFR 25	24	90	68	25	130	0.68
1 1/4	KUG-ZFR 32	32	110	72	30	130	1.08
1 1/2	KUG-ZFR 40	38	120	87	36	165	1.64
2	KUG-ZFR 50	50	140	94	45	165	2.79



Design

One-piece threaded joint construction with reduced cylindrical bore. Stamping as per AD approval certificate A4.

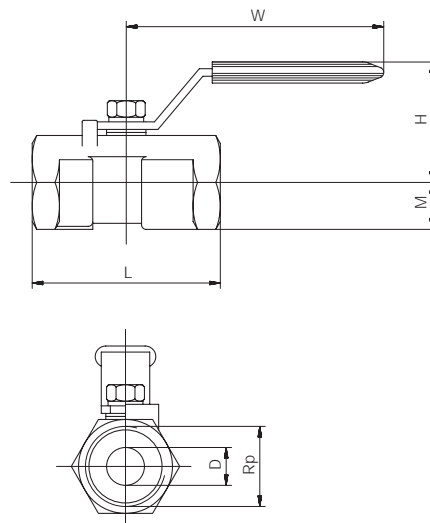
Materials

Body stainless steel 1.4408
 Ball stainless steel 1.4401
 Ball gasket PTFE, glass-fiber reinforced
 Handle stainless steel 1.4301
 plastic sheathed

Technical details

Connections female thread Rp 1/4 to Rp 1
 (as per DIN 2999)
 Temperature range -30 °C to +180 °C
 Nominal pressure PN 64
 Operation 90° rotation of handle

KUG-ZG



Dimensions and ordering details (example: KUG-ZGR 08)

Screw thread Rp	Order no. Female thread	Ø D mm	L mm	H mm	M mm	W mm	Weight kg
1/4	KUG-ZGR 08	5.0	40.0	28	8.6	61.5	0.065
3/8	KUG-ZGR 10	7.0	45.0	30	10.0	74.0	0.095
1/2	KUG-ZGR 15	9.0	56.5	40	12.0	88.0	0.160
3/4	KUG-ZGR 20	12.5	63.0	44	16.6	88.0	0.240
1	KUG-ZGR 25	15.0	70.0	52	19.0	100.0	0.390



Design

Four-piece, threaded-joint construction, with mounting pad for actuator mounting, reduced cylindric bore, T- or L-bore, sealing on all ports. **Does not prevent crossover flow.**

Technische Daten

Connections female thread G 1/2 to G 2
 Temperature range -30 °C to +180 °C
 Nominal pressure PN 63/PN 40 (G 1 1/4 - G 2)
 Operation 90° rotation of handle

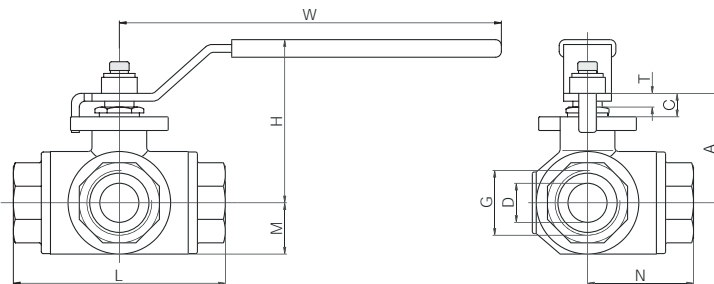
Materials

Body stainless steel 1.4408
 Ball stainless steel 1.4401
 Ball gasket PTFE
 Spindle gasket PTFE/FKM
 Handle stainless steel, plastic sheathed, red

Positions

	T-bore				L-bore		
Handle or actuator mounting	1	2	3	4	5	6	7
Position 0°							
Position 90°							

KUG-PD



Dimensions and ordering details (example: KUG-PDTR 15)

Screw thread G	Order no. T-bore	Order no. L-bore	Ø D mm	L mm	N mm	M mm	H mm	A mm	C mm	T mm	W mm	Weight kg
1/2	KUG-PDTR 15	KUG-PDLR 15	11	79	39.5	18.0	65.5	41	10.5	6	160	0.73
3/4	KUG-PDTR 20	KUG-PDLR 20	16	88	44	22.5	80	53	13	7	190	1.11
1	KUG-PDTR 25	KUG-PDLR 25	20	108	54	26.0	82.5	56	12	11	190	1.63
1 1/4	KUG-PDTR 32	KUG-PDLR 32	25	124	62	33.5	94.5	68	12.5	15	190	2.55
1 1/2	KUG-PDTR 40	KUG-PDLR 40	32	134	67	37.5	119	78	17	15	250	3.74
2	KUG-PDTR 50	KUG-PDLR 50	40	164	82	48.0	121	86	16	15	250	6.25