



## Pneumatic Pilot Valve

Stainless Steel, with Female Thread



measuring  
•  
monitoring  
•  
analysing



- pmax. PN 16
- tmax. +180 °C
- Connections:  
screw thread G 1/2 to G 2
- Short opening and closing times
- Pilot pressure: 6 bar
- Seals: PTFE
- Function: "normally closed"



KOBOLD offices exist in the following countries:

**ARGENTINA, AUSTRIA, BELGIUM, BRAZIL, CANADA, CHINA,  
FRANCE, GERMANY, GREAT BRITAIN, ITALY, NETHERLANDS,  
PERU, POLAND, SWITZERLAND, USA, VENEZUELA**

KOBOLD Messring GmbH  
Nordring 22-24  
D-65719 Hofheim/Ts.  
☎ (06192) 299-0  
Fax (06192) 23398  
E-mail: [info.de@kobold.com](mailto:info.de@kobold.com)  
Internet: [www.kobold.com](http://www.kobold.com)

Model:  
KUP-PV

**Design**

Seat valve with conical seal

**Control function**

In rest position, the valve is closed against flow; upon application of control pressure, it opens.

Control medium	air
Pilot pressure	6 bar
Control connection	G 1/4
Mounting position	any, note specified direction of flow

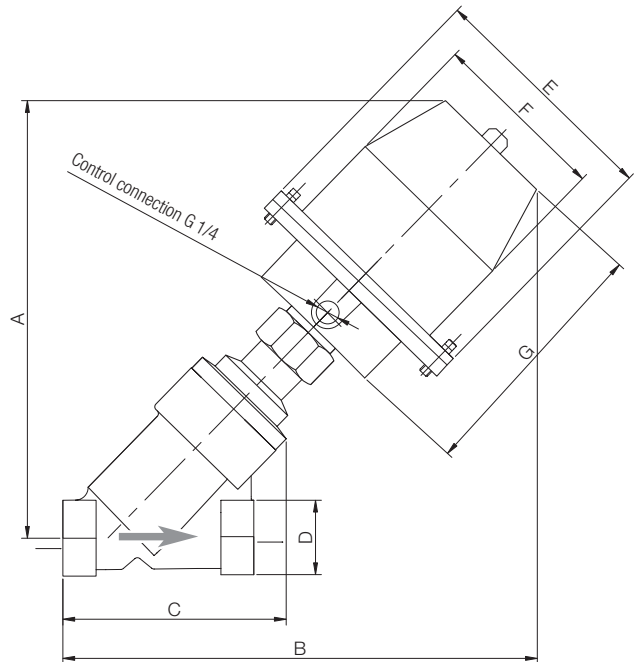
**Technical details**

Connections	female thread G 1/2 to G 2
Temperature range	-30°C to +180°C
Nominal pressure	PN 6 to PN 16 (see table)

**Materials**

Body	stainless steel
Control cylinder	stainless steel
Internal parts	stainless steel
Seal	PTFE

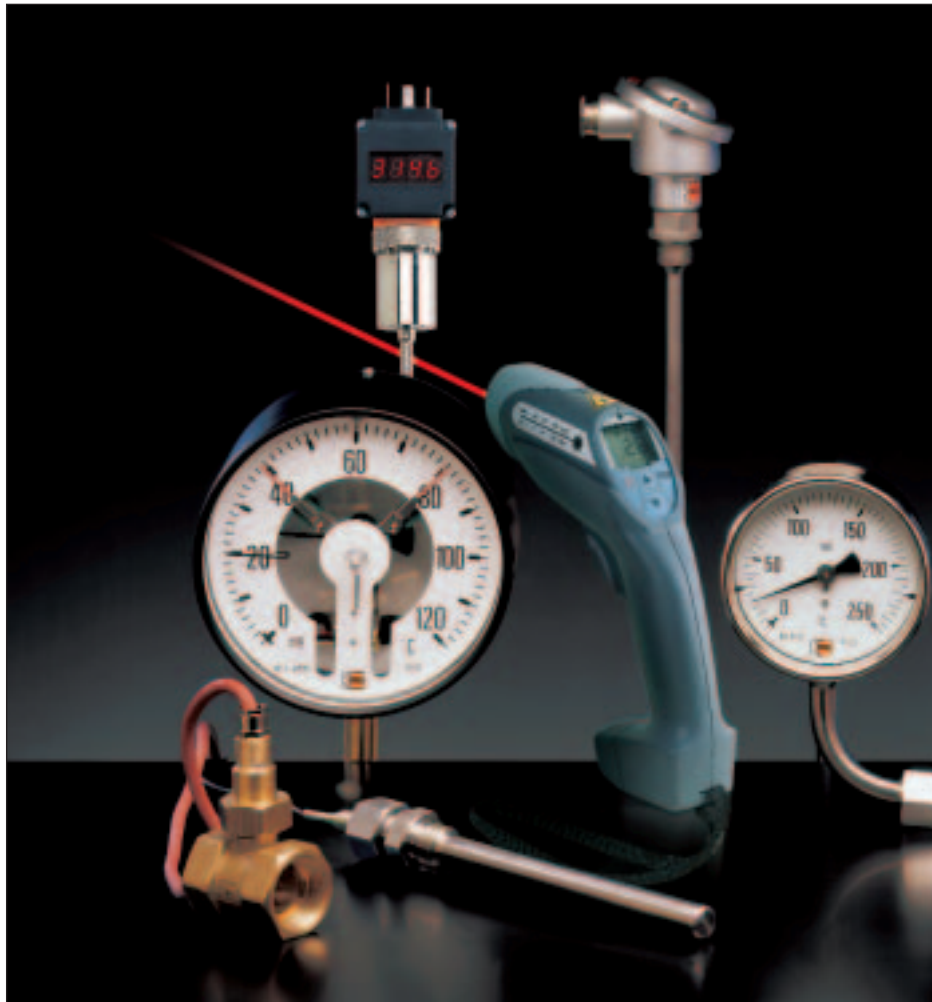
**KUP-PV**



**Dimensions and ordering details** (example: KUP-PVR 15)

Screw thread G	Order no	A mm	B mm	C mm	D mm	E mm	F mm	G mm	k <sub>v</sub> -value m <sup>3</sup> /h	Nominal pressure bar	Weight kg
1/2	KUP-PVR 15	170	185	71	30	96	70	101	3.8	16	2.15
3/4	KUP-PVR 20	170	190	79	37	96	70	101	8.0	10	2.25
1	KUP-PVR 25	175	195	97	42	96	70	101	15.0	6	2.60
1 1/4	KUP-PVR 32	225	250	110	52	112	86	140	23.0	12	4.20
1 1/2	KUP-PVR 40	225	250	120	60	112	86	140	30.0	8	5.00
2	KUP-PVR 50	225	250	140	72	112	86	140	46.0	6	5.55

**For information on our products for temperature monitoring and temperature measurement, ...**



**...see our brochures »T1« and »T2«**

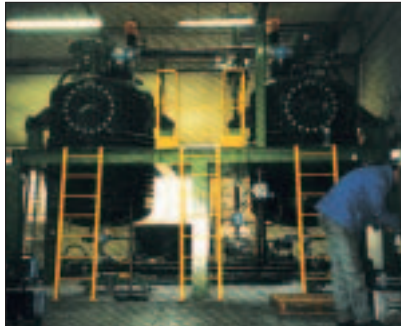
# KOBOLD Complete Systems

Planning, mounting and commissioning with cooperation partners.



## Hot-Melt Long-Distance Supply

Storage tank conveyer installation and dosing plant for hot-melt in heated-oil version.



## Foundry and Dosing Plants

Foundry, Dosing and Diffusion plants for peroxidic interlaced polymer compounds.



## Dosing Plant

Dosing plant in a lignite power plant for developing and dosing of

- Ammonia water
- Caustia soda
- Hardness stabiliser for different water-steam-cycles.



## Compact Dosing Station

Decanting and dosing station for hydrazine and ammonia water solutions in a closed system.



## High Pressure Skid

High pressure conveyer and dosing station for liquid gas and diesel in an industrial power plant.



We offer planing, shipping, mounting and commissioning all by one hand and make your complete mechanical and industrial processing plant a turn key production unit. Our plants are accurately tuned to their individual needs.

## Drying

We deliver drying plants from

- 10 to 16.000 L drier contants
- Operating pressures 20 mbar ... 6 bar
- Temperatures up to 400 °C

## Dosing

We plan dosing plants and conveyer installations of liquids and bulk goods as e.g.:

- Pump and conveyer stations
- High pressure skids in module construction for inflammable liquids and liquid gases
- Pure and purest media
- Dosing plants for chemical, bases, acids, solutions etc.

## Storage

Our storage tanks correspond to product and site specific regulations and directions e.g.:

- Water contaminating liquids
- Dosing plants and conveyer installations
- Instrumentation and control plants
- Unloading machinery

## Reaction

Mixing reactors are multi-purpose apparatus and plants for industrial processing service requirements to mix, melt, granulate, regulate etc.

- Under pressure or vacuum
- Temperatures up to 500 °C

## Mixing

Our Mixers guarantee high mix-grade and product quality.

- Homogenising
- Dispersing
- Moistening
- Tempering