

A comprehensive solution for industrial applications

ULTRASONIC SENSORS

microsonic-App



Free download.

Available on the
App Store



Extract from our online catalogue:

LCA-2

Current to: 2015-01-12

microsonic gmbh, hauert 16, d-44227 dortmund, telephone: +49 231 975151-0, fax: +49 231 975151-51, e-mail: info@microsonic.de
microsonic® is a registered trademark of microsonic GmbH. All rights reserved.

The LCA-2 facilitates the comfortable setting of numerous microsonic sensor series (nice to have).



Highlights

- › **Three-digit digital display** ::: for the display of measured distance values in mm or cm
- › **TeachBox with four-button operation** ::: for programming of the sensor without a PC
- › **LinkCopy function** ::: for copying the sensor settings from one sensor to another without a PC
- › **Uniform microsonic teach-in for all microsonic sensors** ::: to keep easy things easy

Basics

- › **Handy adapter** ::: for the programming of ultrasonic sensors
- › **USB interface** ::: for connection to a PC
- › **T plug** ::: to insert the adapter between the connector cable and the sensor
- › **LinkControl software** ::: free download of the current version on the Internet
- › **Backwards-compatible** ::: so sensors that have been in the field for a long time can still be programmed
- › **Future-proof** ::: since the LinkControl adapter will also support future generations of sensors

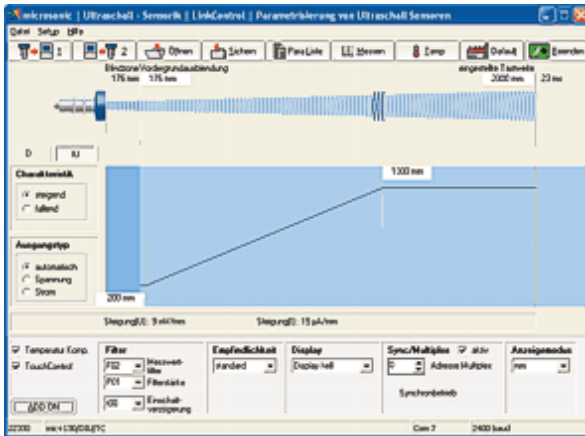
Description

The LinkControl adapter LCA-2

is equipped with a USB interface for connection to a PC or laptop.

With the LinkControl software,

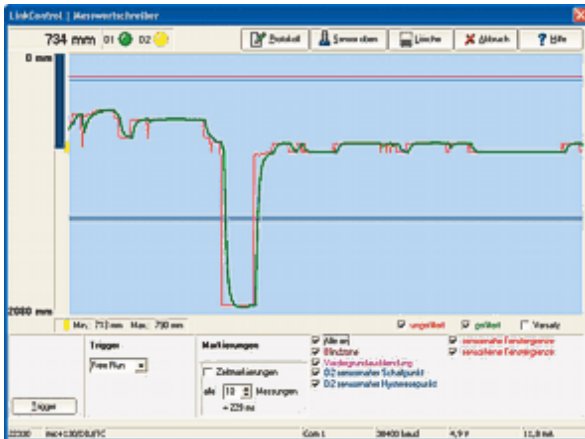
the ultrasonic sensors of the mic+, mic-, vnp, pico+, ipc, lcs, ucs, crm+, hps+, dbk+4, dbk+5, esp-4, esf-1 series can be parameterised under Windows®.



LinkControl software: input mask

The current measurement values

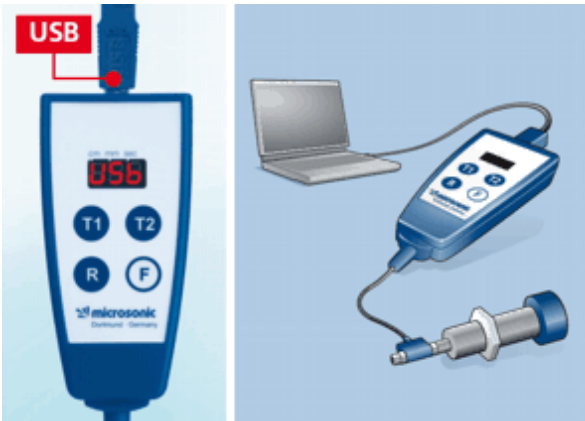
of the ultrasonic sensors can be graphically visualised in the LinkControl software in the form of three different output graphics.



LinkControl software: measurement plotter

The LinkCopy function

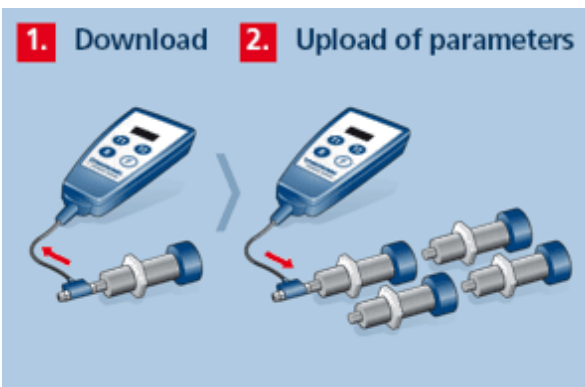
allows the download of parameters from the sensor to the LCA-2 and the subsequent upload of these parameters to a different sensor. This way, sensor settings can be conveniently copied from one sensor to the other.



USB interface for PC connection

Offline programming within LinkCopy

With some sensor series, the sensor settings copied to the LCA-2 can be directly indicated and edited via the digital display before being written back into a sensor.




LinkCopy: Copying of sensor settings

For the LinkCopy function, the LinkControl adapter need not be connected to a PC. The LCA-2 reads the parameters out of the sensor and saves them internally to its EEPROM. The data are thus safely stored in the LinkControl adapter even after supply voltage disconnection and can consequently also be used as a sensor setting archive.

Via the integrated TeachBox,

all ultrasonic sensors which are taught via pin 5 at the sensor plug (mic, pico+, lpc, lcs, esf-1) can be comfortably set. The Link-Control adapter LCA-2 is looped in between the sensor connection line and the sensor; a PC or laptop is not required. During the teach-in process via buttons T1 and T2, the length of the button stroke is indicated in seconds on the display.

The TeachBox functions



T1	Press T1 to teach switched output D1 or the analogue output
T2	Press T2 to teach switched output D2
F T1	Press F+ T1 to load sensor parameters from LCA-2 to the sensor (upload)
F T2	Press F+T2 to load sensor parameters from the sensor to the LCA-2 (download)
F	Press F to show measured values indicated in mm/cm on the digital display
R	Press R (reset) to restart the sensor (for upload, download and measurement value output)

The TeachBox & LinkCopy

LCA-2

scale drawing	detection zone
operating mode	accessories
electrical data	
operating voltage U_B	9 - 30 V d.c., reverse polarity protection
voltage ripple	$\pm 10 \%$
no-load current consumption	$\leq 25 \text{ mA}$
type of connection	4-pin M12 initiator plug

LCA-2

inputs	
input 1	com input
description	USB interface
housing	
material	ABS
class of protection to EN 60529	IP 20
operating temperature	+5°C to +60°C
storage temperature	-40°C to +85°C
weight	150 g
technical features/characteristics	
controls	2 push-buttons + LED display (TouchControl)
indicators	3-digit LED display

LCA-2 Koffer

scale drawing	detection zone
operating mode	accessories
particularities	incl. adapter cable and 24V power pack
description	<p>Set for convenient setting of a number of microsonic sensor families.</p> <p>Contents:</p> <p>LCA-2</p> <ul style="list-style-type: none"> - Adaptor for sensors with cable connection (lcs) incl. cable clamps - Adapter for power supply incl. cable clamps - Power supply 90-240VAC/24VDC, 625 mA, with 2,5 m cable - four exchangeable AC-plugs for use in Europe, USA, Great Britain and Australia - USB - cable A-plug to B-plug - Installation CD with LinkControl software - Manual (German / English)
electrical data	
operating voltage U_B	9 - 30 V d.c., reverse polarity protection
voltage ripple	$\pm 10 \%$
no-load current consumption	$\leq 25 \text{ mA}$
type of connection	4-pin M12 initiator plug

LCA-2 Koffer

inputs	
input 1	com input
description	USB interface
housing	
material	ABS
class of protection to EN 60529	IP 20
operating temperature	+5°C to +60°C
storage temperature	-40°C to +85°C
weight	1,700 g
technical features/characteristics	
controls	2 push-buttons + LED display (TouchControl)
indicators	3-digit LED display
particularities	incl. adapter cable and 24V power pack